

New generation output software with 16 bit rendering (a standard item)



High performance software RIP helps you utilize the various functions of the JV5 series.

16 bit rendering eliminates tone jump and produces fine color reproduction.



[8 bit rendering]
Tone jump is likely to occur in gradation

[16 bit rendering]
Smooth gradation without tone jump

Different images can be laid out freely on the RIP. Versatile editing functions such as tiling, trimming, scaling and rotating are provided. Able to network in environments where Windows and Macintosh co-exist.

RasterLink Pro III

JV5 series specification

Item	Specifications	
	JV5-130S	JV5-160S
Print Head	On-demand Piezo head (Array of 4 staggered print heads)	
Maximum printing width	1,365 mm (53.7")	1,620 mm (63.7")
Printing resolution	540, 720, 1,440 dpi	
Printing mode (Scan x Feed)	720 x 540 dpi: Bi-directional & uni-directional 540 x 900 dpi: Bi-directional & uni-directional 540 or 720 x 720 dpi: Bi-directional & uni-directional 540 or 720 x 1,080 dpi: Bi-directional & uni-directional 720 x 1,440 dpi: Bi-directional & uni-directional 1,440 x 1,440 dpi: Bi-directional & uni-directional	
Ink	Kind	Exclusive solvent ink: Eco-HS1 ink, HS ink, ES3 ink
	Supply	Uninterrupted ink supply system
	capacity	6 color mode: 440cc cartridge x 2/color, 880cc/color 4 color mode: 440cc cartridge x 4/color, 1,760cc/color
Media specification	Size	Max. width 1,375 mm (54.13") Min. width 297 mm (11.6")
	Thickness	1.0 mm or below
	Roll weight	38 kg (83.7lbs.) or below
	Printing surface	Face out
	Inner diameter of roll / outer diameter of roll	2 inch, 3 inch/200 mm (7.87") or below
	Media cutting	Cutting in Y direction by cutter at the head
Media heater	3 stage intelligent heater (PRE/PRINT/POST)	
Media take-up device	Roll take-up device (standard) , inside/outside selectable	
Nozzle checking unit (NCU)	Laser system (Class 1 or below)	
Print gap	1.5 mm to 7mm, step-less & user setting, (automatic detection of media thickness)	
Interface	USB 2.0	
Applicable standard	VCCI Class A, FCC Class A, UL 60950, CE Marking (EMC Directive, Low Voltage Directive) , CB Report, RoHS	
Power source specification	AC 200V to 240V ± 10%, 50/60 Hz ± 1Hz 15 A or below	
Power consumption	3,600 VA or below	
Operating environment	Usable temperature: 20 C to 35 C, Humidity: 35 % to 65%Rh, Non-condensing	
Dimensions (W X D X H)	2,860 x 1,050 x 1,540 mm (112.6" x 41.4" x 60.7")	3,120 x 1,050 x 1,540 mm (122.9" x 41.4" x 60.7")
Weight	324 kg (713.7lbs.) or below	333 kg (733.5lbs.) or below

Option and supply

Item	Item No.
Eco-HS1 ink	440 cc SPC-0538Y·M·C·K·Lm·Lc·Lk
HS ink	440 cc SPC-0473Y·M·C·K·Lm·Lc
ES3 ink	440 cc SPC-0440Y·M·C·K·Lm·Lc
JV5-130S AMF unit	OPT-J0162
JV5-160S AMF unit	OPT-J0161
Solvent wiper kit	10 pcs SPA-0125
Waste ink bottle 4L	1 pc SPA-0128
Cutter blade assembly	1 pc SPA-0126
Cleaning solution MS2/ES3/HS kit200	1 pc SPC-0369
MS cleaning cartridge	220 cc SPC-0294



Eco-HS1 ink
An aggressive, yet low-odor solvent ink which has no toxic ingredients and prevents shrinkage of media (especially thin self-adhesive PVC).



HS ink
An aggressive solvent ink which meets the needs for high scratch resistance and high-speed high density printing.



ES3 ink
Virtually odorless and user-friendly ink which does not require any special ventilation.



AMF
AMF (Automatic media feeder) enables both thin and filmly media or heavy substrates to be fed and taken up with high accuracy. This ensures high quality and stable prints on a broad range of media.



Maximum printing width
1,365mm

JV5-130S



Maximum printing width
1,620mm

JV5-160S

●Some of the samples in this catalogue are artificial renderings. ●Specifications, design and dimensions stated in this catalogue may be subject to change without notice (for technical improvements, etc.) ●The corporate names and merchandise names written on this catalogue are the trademark or registered trademark of the respective corporations. ●Inkjet printers print using extremely fine dots, so colors may vary slightly after replacement of the printing heads. Also note that if using multiple printer units, colors could vary slightly from one unit to other unit due to slight individual differences.

MIMAKI ENGINEERING CO., LTD.

2182-3 Shigeno-otsu, Tomi-city, Nagano 389-0512, Japan
Tel: +81-268-78-2288
trading@mimaki.jp www.mimaki.co.jp

MIMAKI USA, INC.

150 Satellite Boulevard, suite A, Suwanee, Georgia 30024, U.S.A
Atlanta +1-888-530-3988 Boston +1-888-530-3986
Los Angeles +1-888-530-3987 Chicago +1-888-530-3985
www.mimakiusa.com

MIMAKI EUROPE B.V.

Joan Muyskenweg 42-44,
1099CK Amsterdam, The Netherlands
Tel: +31-20-4627-640
www.mimakieurope.com

printed in Japan DB10266-06

High-speed solvent inkjet printer with a super-wide array of 4 printing heads

JV5 Series
JV5-130S / JV5-160S

Mimaki

Aqueous pigment & dye sublimation inks are also available.

Expand your business opportunity with impressive on-demand performance and quality



Unrivalled JV5 performance helps capture time-critical business and expands your opportunities.

Ultra high speed print of 58m²(624sq.ft.)/h at 540 x 720 dpi up to high quality print of 720x1440dpi at 13m²(140sq.ft.)/h.

* JV5-160S

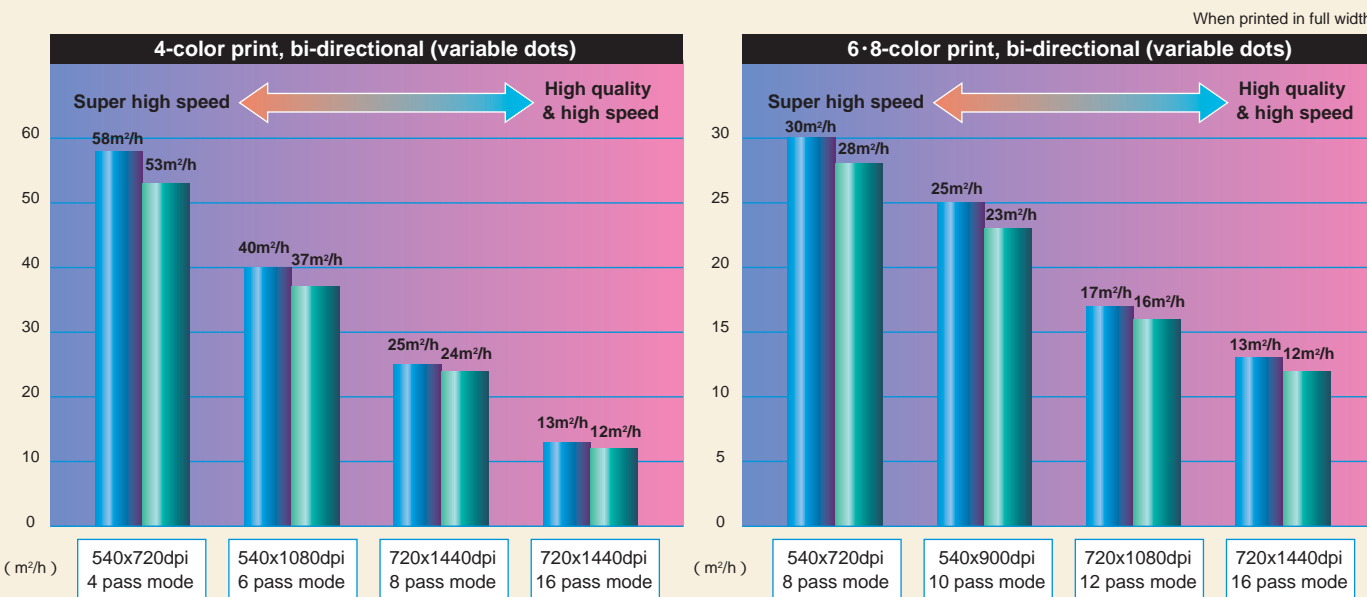
Equipped with many new leading-edge features carefully designed from the perspective of both productivity and the highest standards of image quality.

Have you ever declined valued orders that need immediate delivery? To capture as much business as possible you often need to comply with a customer's request for instant delivery. Your existing inkjet printers cannot satisfy both sufficiently high speed and image quality demands? The JV5 Series is different. It is an amazing new solvent inkjet printer offering not only unsurpassed production capacity, unattended operation efficiency but also beautiful high quality images. While maintaining your current quality you can typically shorten your job turnaround time by up to 75%. With a JV5 series printer you will no longer lose business opportunities because of an inability to provide immediate deliveries.

*Comparison with JV3 series

JV5 series combining high image quality with outstanding performance

JV5-160S JV5-130S

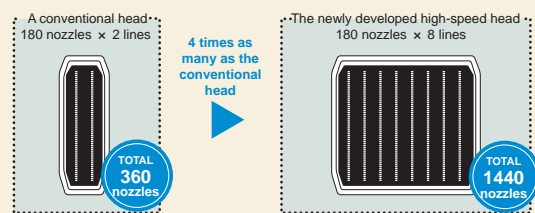


Max. 1,440dpi. Variable dot sizes are adopted.

An advanced new printer design provides both outstanding performance and exceptional image quality

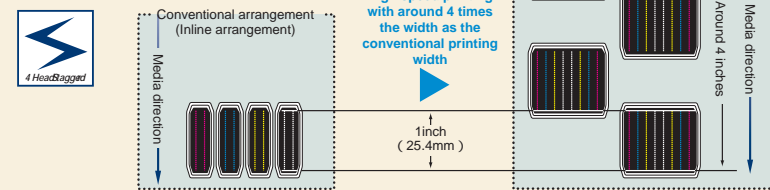
Newly developed high speed head.

Each head has 1,440 nozzles arranged as 8 lines of 180 nozzles, 4 times as many as a conventional head.



4 staggered heads arrangement

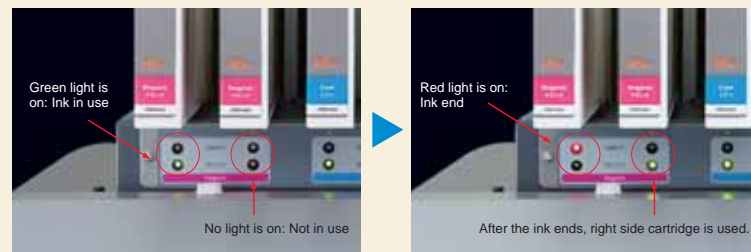
4 of the newly developed high speed heads configured in 4 staggered lines enable high speed printing approximately 4 inches wide.



Cutting edge function for high speed continuous printing

1 UISS (Uninterrupted Ink Supply System)

JV5 can utilize four cartridges per color in 4-color mode. When the ink cartridge runs out, another cartridge begins supplying ink and helps prevent running out of ink. A maximum of 1,760cc ink per color can be loaded at one time.



5 Head height adjustment

1 UISS

3 Drying fan

2 Large heater

7 Media feed compensation

4 Heater panel

6 Automatic nozzle checking

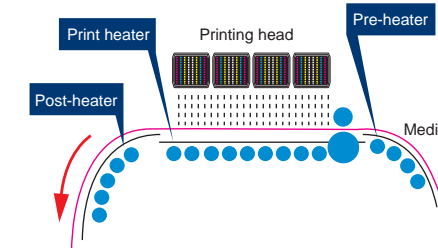
8 USB2.0 interface

9 Automatic take-up device



3 stage intelligent heater

A 3 stage intelligent heater to both enhance color development and to fix the ink by automatically heating the media and controlling its temperature is a standard feature.



2 Large heater & 3 Drying fan

Equipped with a large post-heater and drying fan, which promotes drying of the printed media at high speeds ready for re-winding.



5 Head height adjustment

The thickness of the media is auto-sensed to enable the height of the head to be adjusted automatically for the correct head gap. Even when the thickness of the media is changed, printing is resumed with a constant head gap to always obtain the best printing results.



Head gap can be set step-less in 4 positions between 1.5 mm to 7 mm.

7 Media feed compensation

The media is transported evenly without being affected by the varying weight of the roll media. This eliminates any banding caused by irregular feeding of the media so maintaining the highest print quality.

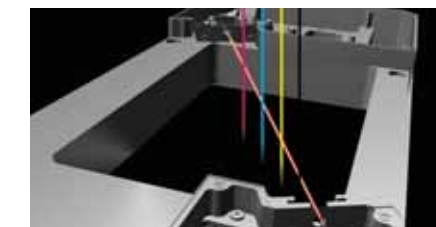
Exhaust cover

The fan and exhaust duct are designed to quickly and efficiently evacuate ink odors during printing.



6 Automatic nozzle checking

The status of ink-discharge from the printing head and any nozzle clogging is quickly detected and cleaned to reduce waste of both media and ink.



Other features

- 8 USB2.0 interface enables high speed data transmission.
- 9 Automatic take-up device to enable continuous unattended operation.

4 Heater panel

The operating panel and heater lamp are grouped together for convenience and ease of use.

